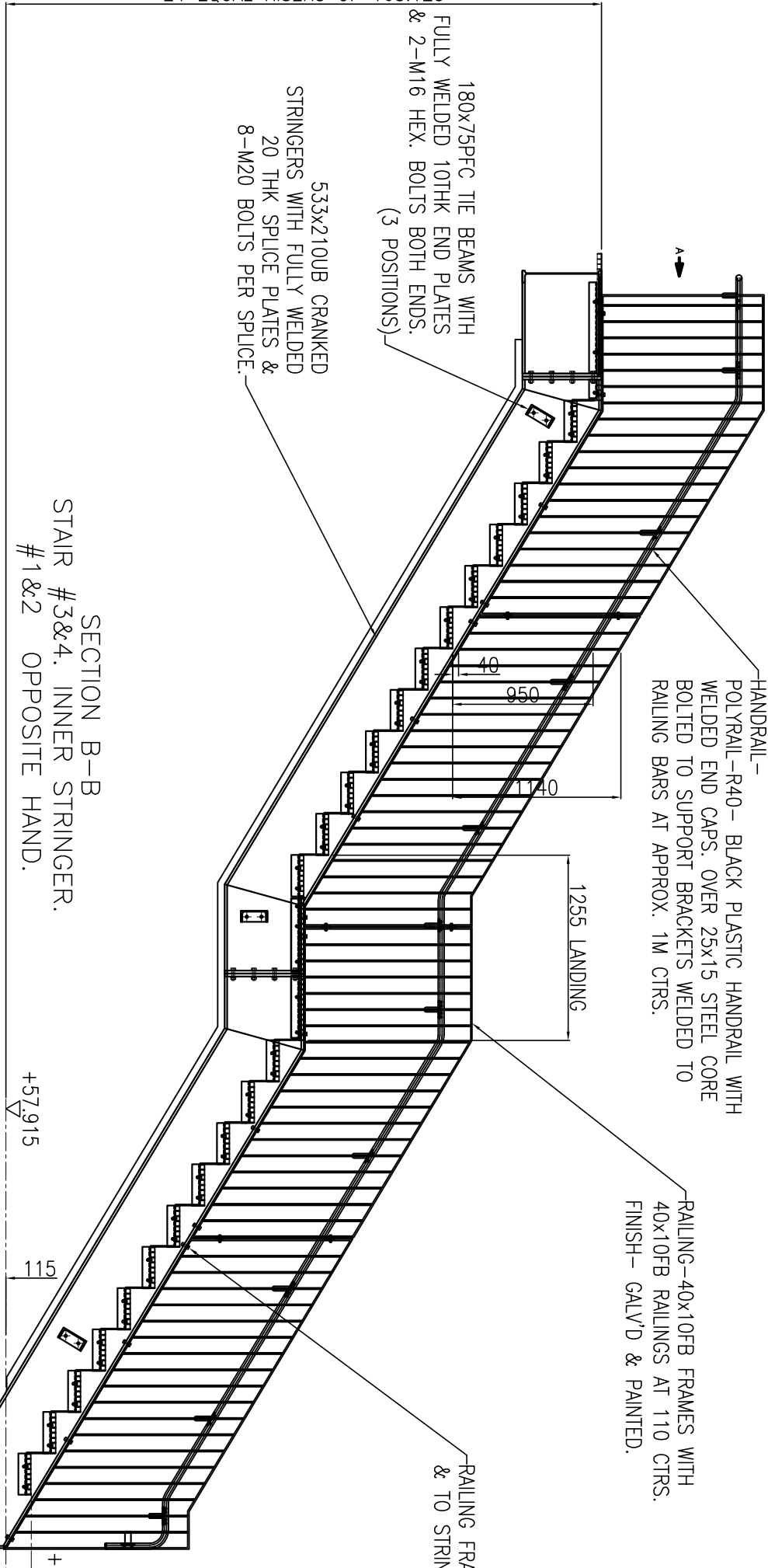
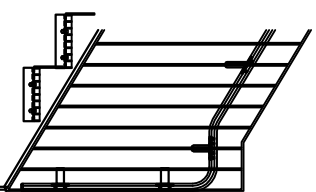


VIEW FROM A



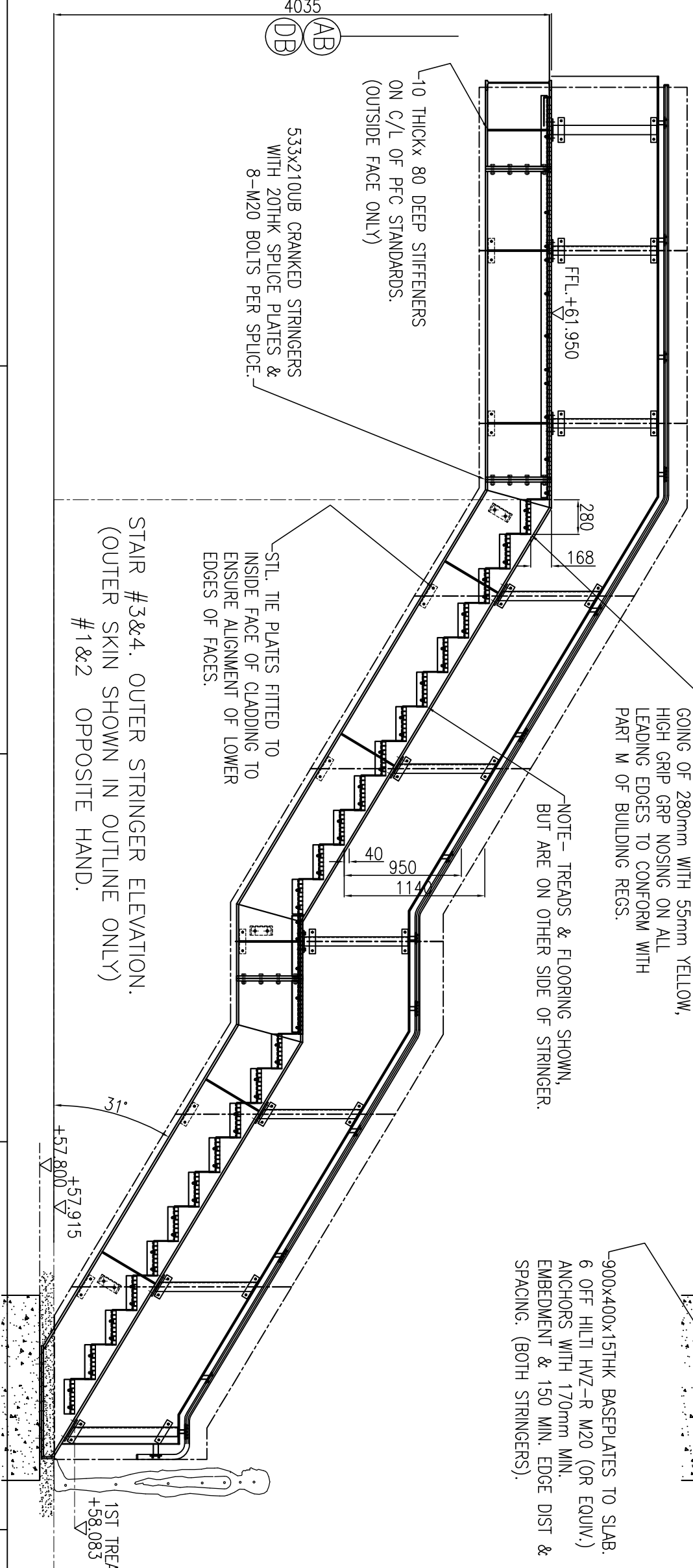
SECTION B-B  
STAIR #3&4. INNER STRINGER.  
#1&2 OPPOSITE HAND.

NOTES:-  
MATERIAL-  
GENERAL STEELWORK TO S275.  
533x210x101 UB TO S355.  
FINISH-GALVANISED & PAINTED TO  
SPEC. AFTER FABRICATION  
(COLOURS AS SPEC).  
ALL BOLTS ETC. GRADE 8.8 &  
GALVANISED UNLESS STATED.



ALTERNATIVE  
HANDRAIL TERMINATION.

4035  
AB  
DB



STAIR #3&4. OUTER STRINGER ELEVATION.  
(OUTER SKIN SHOWN IN OUTLINE ONLY)  
#1&2 OPPOSITE HAND.

STAIR TREAD RISERS OF 168mm &  
GOING OF 280mm WITH 55mm YELLOW,  
HIGH GRIP GRP NOSING ON ALL  
LEADING EDGES TO CONFORM WITH  
PART M OF BUILDING REGS.

NOTE- TREADS & FLOORING SHOWN,  
BUT ARE ON OTHER SIDE OF STRINGER.

Rev	Description	Drawn	Chk	App	Date
A	FOR CONSTRUCTION	JRS			29.11.10

<p>This drawing is issued by Straight Line Services Limited subject to the conditions of use set out in the 'Terms and Conditions' document or in part, or used in any way detrimental to Straight Line Services' interest.</p>	
<p><b>STRAIGHT LINE SERVICES</b></p> <p>STRAIGHT LINE SERVICES LTD NORTH DOWN FERRAL, MCDONNAN, KENT DA13 0AR Telephone 01474-832244 Fax 01474 834414</p>	
Client	KIER
Contract/project	THAMESVIEW SCHOOL
Drawing Title	EXTERNAL STAIRS. 1-4 STAIRCASE SECTIONS
Projection	First Angle
Project Number	
Scale	1:40 @A3
Sheet	Of
Drawing Number	TVS-X-A-(24)X06
Revision	A